

A wide-angle photograph of a mountain range. The foreground and middle ground are dominated by lush green, rolling hills and valleys. In the background, several sharp mountain peaks are visible, some with patches of snow or light-colored rock. The sky is a pale, overcast grey. The overall scene is majestic and natural.

# KINGDOM BUILDERS

*2025 Kingdom Builders Project Guidebook*

God's  
HEART is  
GLOBAL.





"THIS IS HOW MUCH  
GOD LOVED THE  
WORLD: HE GAVE HIS  
SON, HIS ONE AND  
ONLY SON. AND THIS IS  
WHY: SO THAT NO ONE  
NEED BE DESTROYED;  
BY BELIEVING IN HIM,  
ANYONE CAN HAVE A  
WHOLE AND  
LASTING LIFE."

*John 3:16 (MSG)*

## Realife Church Family,

We continue to be in awe of the amazing blessings that God has poured out in and through Realife Church. In this season of the church, Kristin and I have found ourselves constantly thanking God for the overflow of blessings and praising Him that He would use us to further His Kingdom.

At the end of the book of Matthew in the New Testament, we find one of the most well-known sermons of all time. It's the pinnacle of Jesus' teaching, and it serves as the foundational purpose of the Church. The message, while short, gives a clear call with firm direction: GO!

We believe it is our calling - our mission - to send our best to see the Great Commission fulfilled. As Kingdom Builders, we are a faithful community passionate about generosity and bringing the Good News of the gospel to all nations.

Together, we get to continue to press into the vision God has graciously placed on our hearts - to send out 100 people into full-time ministry from Realife Church. We get to watch God do the miraculous as we financially partner with Christ-centered ministries all around the world.

In this guidebook, you will see the heart of Realife Church poured out. Our heart is global, because God's heart is global. Through our Global Projects and Kingdom Builders ministries, we all have the opportunity to participate in this great mission that Jesus Christ asked us to be a part of.

We are full of faith for all that God is going to do in the year to come, and continually humbled that He would use us, the Church, all for Jesus to be glorified.

**Adam & Kristin  
Detamore**

*Lead Pastors of Realife Church*





# THE STATE OF THE WORLD

The State of the World paints  
a picture of a worthy work left  
unfinished.

To understand this world, we must  
be aware of how many people have  
yet to hear the Good News of  
Jesus. Those that are waiting and  
have very little or no access to this  
gospel are known as the Unreached.

At Realife Church, we have a global  
heart because we understand  
the importance of the Great  
Commission and want to see all of  
God's people reached with the  
Good News of Jesus.

# 5 LANES OF KINGDOM BUILDERS

All throughout Scripture, we see God's heart for people—both near and far. From Genesis to Revelation, His desire is to make Himself known and show His love to the world. Jesus' final words, known as the Great Commission, are found in Acts 1:8: "You will be my witnesses in Jerusalem, and in all Judea and Samaria, and to the ends of the earth."

At Realife Church, we take this mission seriously. Kingdom Builders is our way of living out God's call to impact the world. Through five strategic lanes, we partner together to advance the Gospel:

- **Global Missions:** Advances the Gospel worldwide through missionary support and strategic global projects.
- **National Evangelism:** Supports church planting and college ministries to spread the Gospel across the U.S.
- **Local Outreach:** Partners with local organizations to meet community needs and share the love of Christ.
- **Next Generation Leaders:** Invests in raising up future leaders to serve the Lord, the church, and the world.
- **Realife Projects:** Funds capital projects to support the growth and expansion of Realife Church.



# THE “UNREACHED”

7,250 people groups  
in the world are considered  
unreached

3.42 billion people  
live among the Unreached

42% of the world  
has yet to hear the Good  
News of Jesus

1,800 language  
groups on earth do not  
have Scripture translated  
into their language

There are 7,397  
language groups  
on earth

Only 742 languages  
have a complete Bible



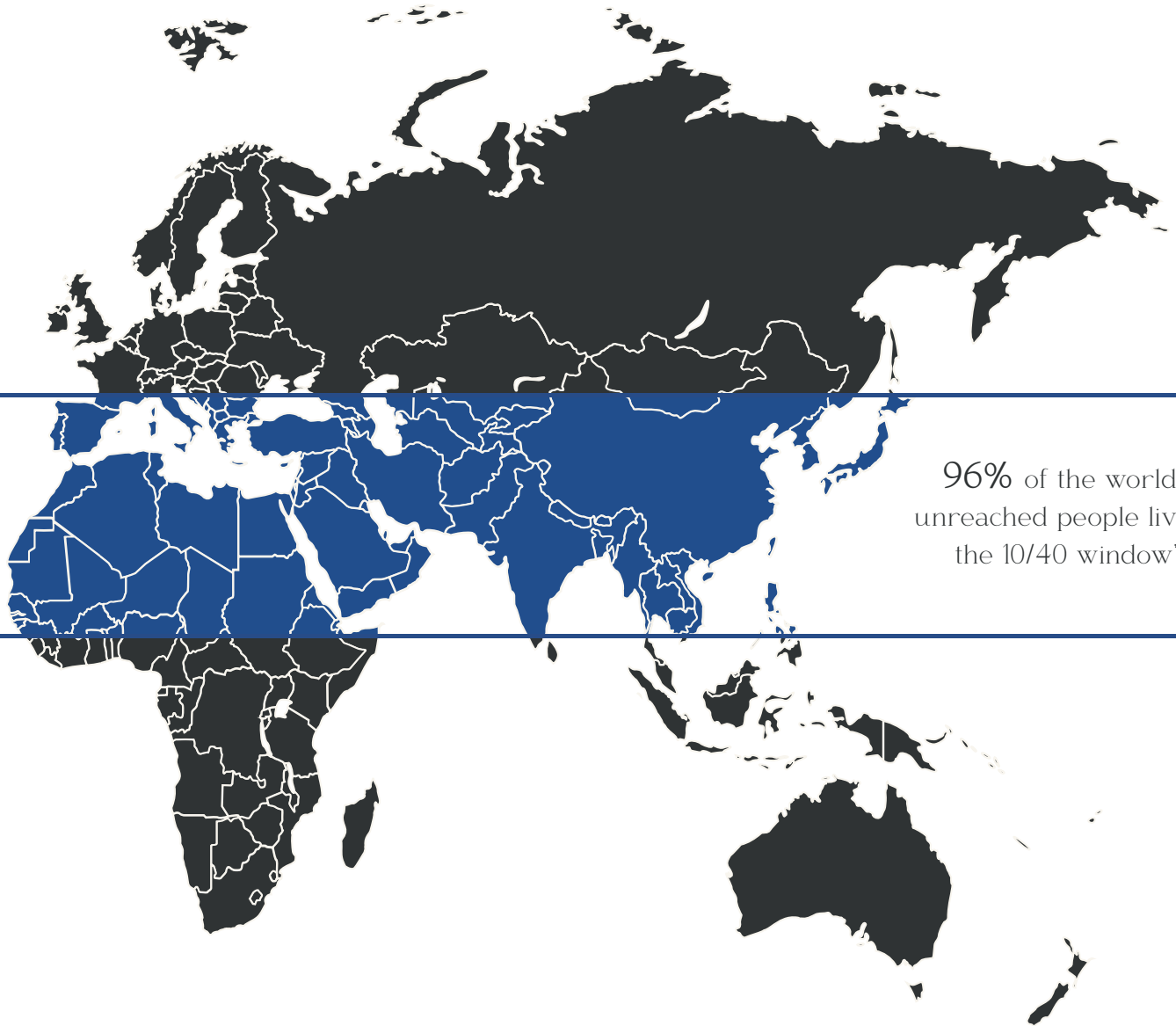
# 10/40 WINDOW

A geographic region of the  
world located between 10  
& 40 degrees latitude from  
West Africa to East Asia

\*Map and statistics gathered from JoshuaProject.net



The unequal distribution of the Gospel of Jesus Christ  
is the greatest injustice on earth today.




96% of the world's  
unreached people live in  
the 10/40 window\*

So much good work is being done, and we believe the  
best days to reach our world are still ahead of us.



4 out of  
on  
an  
PEOPLE

A background image of a beach with shallow water and a person's head visible in the distance. The text is overlaid on the image.

of 10 people  
earth live in  
UNREACHED  
OPLE GROUP.

# CHANGING THE STATISTICS

Because of our church's generosity and our commitment to reaching the lost, we are making a real impact globally.

Together, we are changing the statistics and advancing the Gospel worldwide. We provide monthly financial support to 48 missionaries across 31 countries.

On average, Realife Church sends \$2,948 per day to fund the spread of the Gospel - fueling life-changing ministry and bringing hope to people around the world.



THE GOSPEL  
IS ONLY THE  
GOOD NEWS  
IF IT GETS  
THERE ON  
TIME.

Carl F. H. Henry



# Our Global Impact

*So that ALL may hear*

As of January 2025

● - 10/40 Window

<i>Flag</i>	<i>Country</i>	<i>% of Evangelical Christians</i>	<i>Supported Missionaries</i>	<i>GO Teams Sent</i>
	Arab World	0.05%	7	
	Austria	0.57%	1	
	Belgium	1.48%	1	
	Belize	23.97%	1	
	Cambodia	1.50%	1	
	Cameroon	8.64%	1	
	Columbia	10.74%	1	
	East Africa	0.01%	2	
	Egypt	4.50%	1	
	El Salvador	45.06%	1	2
	England	7.60%	1	
	France	1.23%	1	
	Guinea	0.68%	1	
	Hungary	3.06%	1	1
	India	Unknown	1	
	Israel	0.70%	1	
	Italy	1.46%	1	
	Kenya	45.82%	2	1
	Liberia	11.66	1	
	Lithuania	1.40%	1	
	Mexico	10.45%	1	
	Mozambique	14.18%	1	
	New Zealand	17.63%	1	
	Northern Asia	15%	3	
	Philippines	11.33%	1	
	Scotland	38.80%	1	1
	Serbia	0.72%	2	
	South Africa	21.02%	2	
	Tanzania	10.97%	2	1
	Togo	10.93%	1	
	Wales	43.60%	1	

# Global

## PROJECT RESCUE

Rescuing and restoring victims of sex trafficking through the love and power of Jesus Christ.

## FIRE BIBLE

Equips and empowers the global Church by providing access to the Bible, along with powerful study tools and resources, in languages and contexts where they are most needed.

## THE STONE TABLE

Teaching Christian leaders and missionaries in Europe how to lead Kingdom-focused businesses.

## RWANDA PROJECT

Building churches and equipping Pastors across the nation of Rwanda.

## THE BOAZ PROJECT

Helping children overcome trauma & break the cycle of poverty for generations to come.

## PRIORITY ONE

Educating and equipping pastors of the global Church through Bible colleges, schools and leadership development organizations.

## PROJECT 42

Raising awareness and resources for the 42% of the world still waiting for access to the gospel of Jesus Christ.

## CONVOY OF HOPE

Providing disaster relief and support around the world and bringing hope in the name of Jesus.

## ONE CHILD

Dedicated to transforming the lives of children in poverty through education, care, and spiritual support. By partnering with local churches around the world, they provide opportunities for children to break free from the cycle of poverty and find hope in Christ.

## BRIDGE FAMILY CHURCH SCOTLAND

Bridge Family Church's mission is to "connect people to God, to others, and to their purpose." They aim to build a community of believers in Edinburgh who grow in faith and impact the world with the love of Christ.

# National

## TRINITY LIFE MINISTRY

A redemptive community that brings hope by transforming men's lives and reconciling their families through the power of Jesus Christ.

## CHI ALPHA

A Christian campus ministry that seeks to reach, equip, and empower students to become fully devoted followers of Jesus.

## CHURCH MULTIPLICATION NETWORK (CMN)

Equipping and funding leaders to plant healthy, Spirit-filled churches across the U.S.

## ASSOCIATION OF RELATED CHURCHES (ARC)

Churches working with church planters and church leaders to provide support, guidance and resources to launch and grow life-giving churches.

## FELLOWSHIP OF CHRISTIAN ATHLETES (FCA)

Seeks to make disciples through the methods of engaging, equipping and empowering coaches and athletes to know and grow in Christ and lead others to do the same.



# Local



Scan the QR code to view our current missionary partners.

## THE LANDING PLACE

The Landing Place is a safe place to give Hancock County youth of our community (ages 13 to 19) hope and real-life strategies and principles to break the cycles of dysfunction and destructive behaviors, while also learning healthy patterns of living.

## KENNETH BUTLER MEMORIAL SOUP KITCHEN

Serving the Sheep of Jesus Christ regardless of their race, religion, gender, orientation, medical diagnosis, mental capacity or criminal history by providing their immediate need for nutritious meals.

## LIFE CHOICES

Affirming life through a loving commitment to the spiritual, physical, and emotional care of those facing uncertainty in family life or pregnancy.

## LOVE INC.

Mobilizing local churches to transform lives and communities in the Name of Christ. Our organization bridges resources by working with local churches, agencies, and other community resources.

## TALITHA KOUM

A recovery program for women eighteen and older who desire to live free from addiction. They give women a safe, family-like environment to rebuild their lives and learn how to live sober.

## LIFEWISE

Protected by a Supreme Court ruling, LifeWise works with public schools to integrate a Bible class into their weekly class schedule.

## WELLSPRING & CELEBRATE RECOVERY

Providing a holistic approach to care for individuals struggling with mental health and addiction related issues.

## CHRISTMAS BENEVOLENCE

Funds to assist Realife families who need additional help around the Christmas season.

## INDY NETWORK

Exists to unite businesses, churches, neighborhood leadership and street level ministries to effect lasting change in the lives of people and our community by truly loving God and loving People.

## SERVE DAY

A nationwide initiative that provides opportunities to serve our local communities and share the love of God through practical acts of kindness.

## WHEELER MISSION

A non-denominational, Christian, social services organization, which provides emergency care, recovery services, and Christ-centered transformation to individuals experiencing homelessness, poverty, and need in Central and South Central Indiana without regard to race, color, sexual orientation, creed, national origin, or religion.

# PARTNERS

# SEU REALIFE & THE REALIFE 100

At Realife Church, we have a passion for raising up leaders who will go into full-time ministry, committing at least one year to serve and seeking God's direction for a lifetime. We are committed to inspiring the next generation to pursue God's call, no matter the cost. Last year, in 2024, we invested over \$95,000 on our Next Generation through camps, GO Trip scholarships, and more, and every year we see students called into full-time ministry.

We believe in sending our best to fulfill the Great Commission. Through Realife 100, we are praying for and equipping 100 individuals, couples, and families to step into vocational ministry; whether as church planters, student pastors, kids pastors, missionaries, or beyond. One way we're preparing the next generation is through Realife SEU, where young adults and students receive hands-on ministry training. Would you pray for those God is calling to go?



*Kaiana Fenwick, Short-term missionary to Hungary*

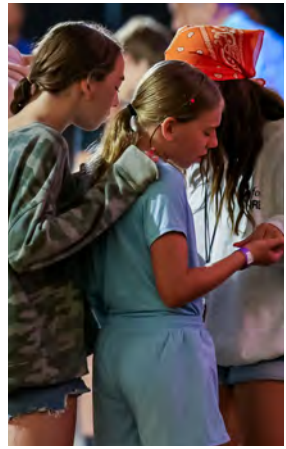
# **SEU REALIFE**



*2024/25 SEU Realife Students*

Logan LeRoy, *SEU Student, on being a Next  
Generation Leader*

“Throughout my time as a student, I could feel God pulling me to step up and grow as a leader—for a time, I didn’t embrace it. But God got a hold of my heart. Now, I’m leading in Students and I see more than ever how powerful God’s love is. Being part of this community has stretched my faith and shown me how much He can do when we just say “yes” to Him.”



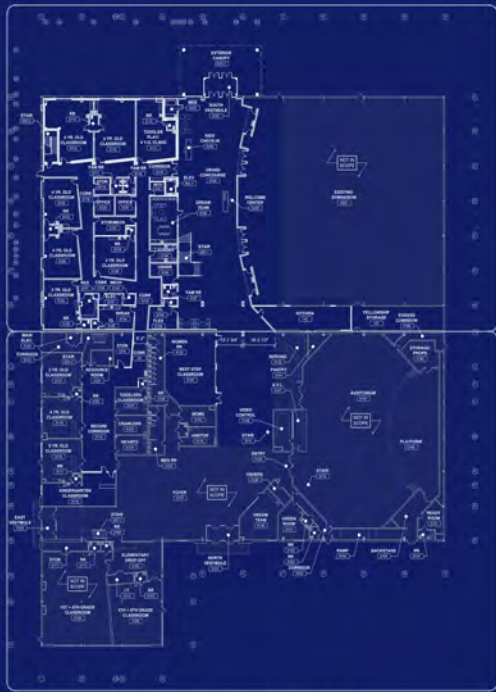
# A HEART FOR OUR COMMUNITY

Hancock County's growth has exceeded projections in recent years, with an additional 20% increase expected by 2030. As our community expands, we are committed to ensuring that everyone has the opportunity to hear about Jesus in a place where they feel welcomed and loved.

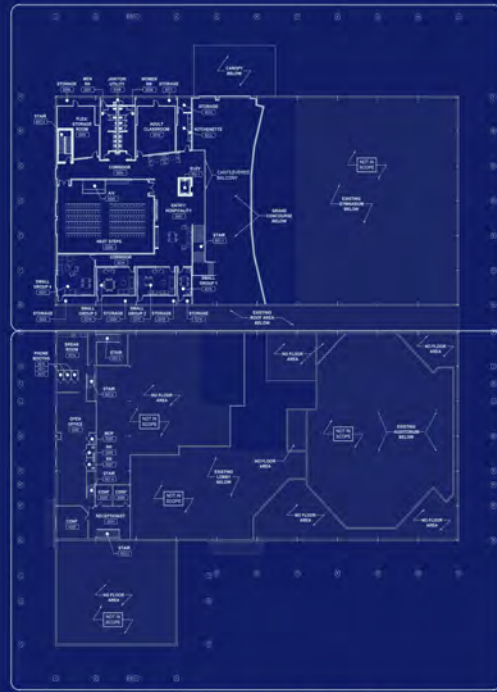
Launching a campus in Greenfield allows us to create space for more people to worship right where they live. As Realife grows, we remain dedicated to fostering deeper connections through small groups and local campuses. Our vision is to see a Realife Church campus in every school district of Hancock County.

Alongside our partnerships with local ministries, Realife STEAM Academy provides a Christ-centered, high-quality education that nurtures children academically, spiritually, and socially - opening doors to reach families who may not otherwise step into a church.





1 OVERALL FIRST FLOOR PLAN  
SCALE: 1" = 20'



1 OVERALL SECOND FLOOR PLAN  
SCALE: 1" = 20'

**T&W**  
SITE ARCHITECTURE

**REAL LIFE CHURCH**  
PHASE 4 + 5 RENOVATION  
5151 WEST US HIGHWAY 40  
GREENFIELD, IN 46140

PROGRESS SET  
NOT FOR  
CONSTRUCTION

**D110**





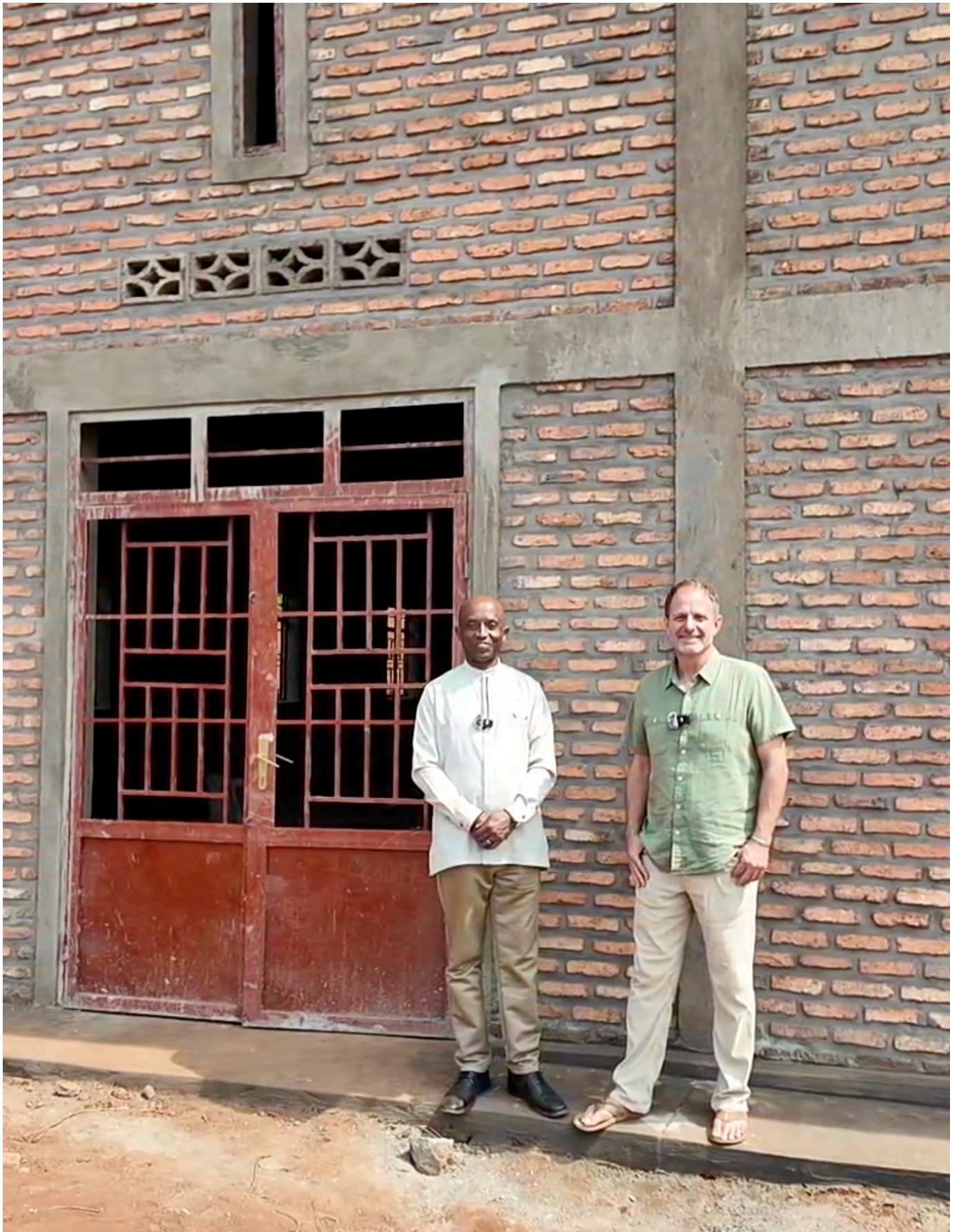
# EXPANDING OUR REACH

## NEW PALESTINE

Realife Church is excited to begin Phase 1 of our expansion plan! This phase focuses on extending our kids' area and creating more space for the STEAM Academy, allowing us to welcome even more families into this incredible program. Not only will this expansion help us reach more people in our community, but it will also provide larger, more specialized spaces for our kids and families to experience life-changing moments on Sunday mornings.

## GREENFIELD

At the same time, we are actively searching for a permanent facility for Realife Greenfield. We know that Greenfield-Central High School will eventually repurpose the auditorium for additional classrooms, and as our church continues to grow, we anticipate outgrowing the space available to us. We are praying for the perfect, permanent location - one that will allow us to continue making a lasting impact in Greenfield for years to come.



“Your investment in church planting has helped to establish a church in our community where we already have over 100 adults and 100 children attending on a regular basis. Because of you, our community can now learn about the love of Jesus!”



# WHO ARE KINGDOM BUILDERS?

Kingdom Builders are a faithful community passionate about generosity and bringing the Good News of the gospel to all nations. From kids to adults, the profile of a Kingdom Builder is the same. This community, open to all, is built of individuals and families that prayerfully commit to give over-and-above their tithes to impact our local community, our nation, and our world.

# Kingdom Impact

Your generosity through Kingdom Builders is changing lives and helping build the Kingdom of God all around the world! Here is a glimpse into the impact of your generosity:

Over 1,519 families  
have given to  
Kingdom Builders.

\$7,152,185.98  
given towards  
Reaching the  
world for Jesus  
since 2007.

Through CMN,  
we have helped  
to plant 5,159  
churches.

In 2024 we sent  
over 60% of all  
Kingdom Builders  
Funds to spread  
the Gospel around  
the world.

Through our Kingdom Builders' partners,  
your generosity is:

Bringing the hope  
of the gospel to  
people all around  
the world.

Resourcing those  
experiencing  
homelessness and  
poverty.

Building the  
church locally.

Training and  
equipping  
Christian leaders  
around the world.

Planting the  
church globally.

Investing in the  
next generation.

Helping people  
gain freedom  
from addiction  
and mental health  
challenges.

Putting God's  
Word into the  
hands of those  
who don't  
currently have  
access to it.

# THE GREAT COMMISSION

Jesus' last words spoken on earth were, 'Go into all the world and make disciples.' These words are known as the Great Commission and were not given to a group of missionaries, but to those who called themselves followers of Jesus.

With 42% of the world still waiting to hear that Jesus loves them, we ALL have a part to play in the Great Commission.

Whether that be PRAYING, GIVING, or GOING, God's heart for the world is what spurs us on to play our part in bringing the Good News to the ends of the earth.



# PRAY FIRST

Prayer is something we all can do! Let's ask God to extend His Kingdom to the ends of the earth.

“PRAYING HEARTS  
AND HANDS ONLY  
CAN DO GOD’S  
WORK. PRAYER  
SUCCEEDS WHEN  
ALL ELSE FAILS.”

E.M. Bounds

# GIVE

As a Kingdom Builder giver, you play a vital role in making missions work possible around the world. Sending requires both financial sacrifice and a heart willing to live on less in order to give more. We trust God to guide us as we steward His resources wisely, ensuring every dollar makes an eternal impact.

“THEREFORE  
GO AND MAKE  
DISCIPLES OF  
ALL NATIONS...”

Matthew 28:19

# GO

God can use each one of our unique talents, skills, vocations and personalities to minister to those all around the world.



## SHORT-TERM: GO TRIPS

Several times a year, teams of volunteers from our church travel around the world to help meet physical and spiritual needs and share the love of Jesus Christ. We offer a variety of team options - one for everyone in the family. You can choose from domestic trips, international trips, and virtual trips. Going is always worth the investment!

*Scan the QR code for our current GO Trip opportunities.*

## LONG-TERM: THE REALIFE 100

It is our vision to raise up and send out 100 individuals, couples and families who are willing to serve God in full-time ministry. The Realife 100 sacrifice their time, convenience and comfort to obey the Great Commission.

*How do you make a commitment to being a Kingdom Builder?*

# PLAN

First, make a plan to give. This is a budgeted amount that you plan to give each month. When you have plans and are diligent, it leads to plenty (Proverbs 21:5). God is excited when you have a plan! Whatever the amount is, have the plan in place, work the plan and be obedient to it. Start there.

# VISION

Next, ask God for a vision of what He can do through you beyond your natural income - it's a step of faith. 'With God's help, what could I give this year?' Habakkuk 2:2 tells us to write it down and pray over it, trusting that He will provide (Philippians 4:19). When you focus on what's in His hands, the possibilities reach a whole new level!

# DREAM

Lastly, what would be a dream amount you could give? Hold on to it. This number is only between you and God. This may be a multi-year dream. In the next decade, by the time you're 50, etc. Watch as each step of faith you take, God moves you closer to that dream. God can do exceedingly abundantly more than all we can ask for or imagine (Ephesians 3:20).

*Write down your own Plan, Vision, & Dream for being a Kingdom Builder.*

# PLAN

---

---

---

---

---

---

---

---

---

---

# VISION

---

---

---

---

---

---

---

---

---

---

# DREAM

---

---

---

---

---

---

---

---

---

---

*2025 Special Project Giving Opportunities: February, June, August & December*

# Christmas Offering

Each year, as a church, we participate in a Christmas Offering. As Kingdom Builders, this is the biggest weekend of the year. It is an opportunity to give generously and experience a miracle together through our Kingdom Builders' partners. Throughout the year, commit to praying about the part God has for you to play in the Christmas Offering and continue to work your plan,

This year, our Christmas offering supports the Europe Region of AG World Missions. Once a hub of faith, Europe is now one of the most secular places on earth. This place where the Reformation was born and where many missionaries were sent around the world is now in need of missionary and church planting efforts. We're helping train leaders and plant churches to see the church revitalized and growing, reaching people across Europe for Jesus.



# Get Involved

## LEARN MORE



Learn more about Kingdom Builders and the impact your generosity is making all around the world.

## GIVE



Give online to Kingdom Builders by scanning here

## SHARE YOUR STORY



We want to hear stories of generosity! Share your story of what God has done in and through you or someone in your life and allow it to impact and inspire others along their journey of living 'blessed to be a blessing.' Scan here to share your story!





too tired  
...for this shirt

Michael  
Hartman  
**SERVE**  
RAULIFE GURCH

R

RACKS

